

SCREW/VVS

VITE ALTA PRESSIONE/ACCIAIO
 HIGH PRESSURE SCREW COUPLINGS/STEEL
 HOCHDRUCKSCHRAUBKUPPLUNGEN/STAHL
 COUPLEURS A VISSER HAUTE PRESSION/ACIER

Caratteristiche tecniche I

- Intercambiabilità: Faster VVS
- Occlusione: valvola
- Aggancio: a vite
- Materiale: acciaio
- Finitura: Zn-Fe (Cr III)
- Filettature: BSP - NPT
- Guarnizioni standard: NBR
- Temperatura d'esercizio: -25 °C +100 °C
- Guarnizioni opzionali: FKM, EPDM o altro
- Pressioni di esercizio: 210-650 bar
- Connessione in pressione: consentita (lato maschio o lato femmina)

Technical data E

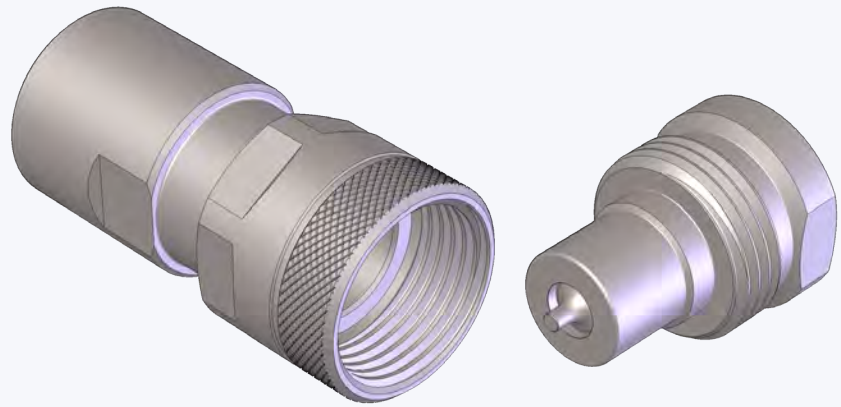
- Interchange: VVS Faster
- Occlusion: poppet
- Locking: screw
- Material: steel
- Finishing: Zn-Fe (Cr III)
- Threads: BSP - NPT
- Standard seals: NBR
- Working temperature: -25 °C +100 °C
- Optional seals: FKM, EPDM or more
- Working pressure: 210-650 bar
- Connection under pressure: allowed (both male or female side)

Technische Merkmale D

- Austauschbarkeit: VVS Faster
- Verschluss: ventil
- Kupplung: Schraubweise
- Werkstoff: Stahl
- Ausführung: Zn-Fe (Cr III)
- Gewinde: BSP - NPT
- Standard-Dichtungen: NBR
- Betriebstemperatur: -25 °C +100 °C
- Dichtungen nach Wahl: FKM, EPDM, usw.
- Betriebsdruck: 210-650 bar
- Kuppeln unter Druck: erlaubt (Steckerseite oder Muffeseite)

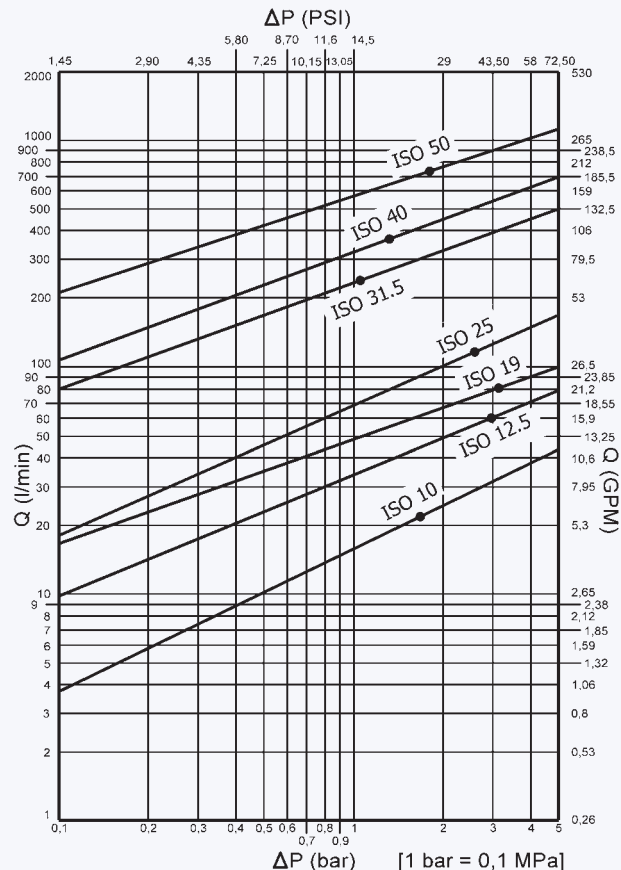
Caracteristiques techniques F

- Intercangeabilità: VVS Faster
- Obturation: clapet
- Accrochage: a vissé
- Matériel: acier
- Traitement: Zn-Fe (Cr III)
- Taraudage: BSP - NPT
- Joints standard: NBR
- Température de service: -25 °C +100 °C
- Joints facultatifs: FKM, EPDM, ect.
- Pression de service: 210-650 bar
- Connexion sous pression: possible (côté male ou femelle)

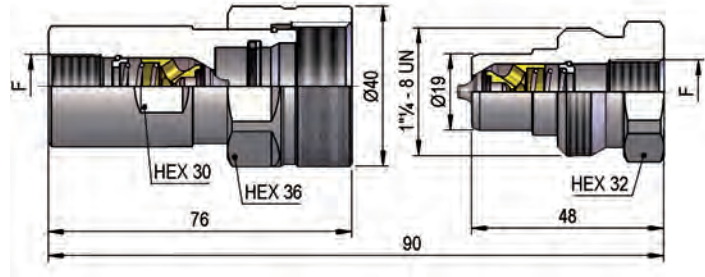


Nominal size				Max working pressure	Rated flow	Max flow rate	Min burst pressure			Fluid spillage
							Male	Female	Coupled	
DNP	BG	ISO	mm	MPa	l/min	l/min	MPa	MPa	MPa	cc
10	2	10	6.2	65	18	18	300	300	300	1.9
13	3	12.5	9	60	23	23	250	270	220	2.7
20	4	19	11	50	45	45	240	260	210	9.3
25	5	25	13.3	46	106	106	230	260	200	16
30	6	31.5	22.2	36	189	189	150	150	150	30
39	7	40	24.6	36	300	300	120	150	150	54
50	8	50	30	21	757	757	130	130	105	120

1 MPa = 145.04 psi • 1 l = 0.264 gal

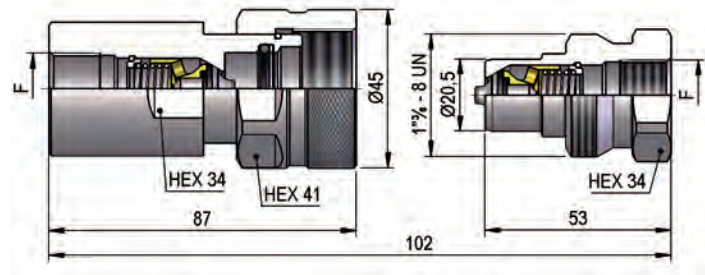


VVV1 DN10 - BG 2 - ISO 10



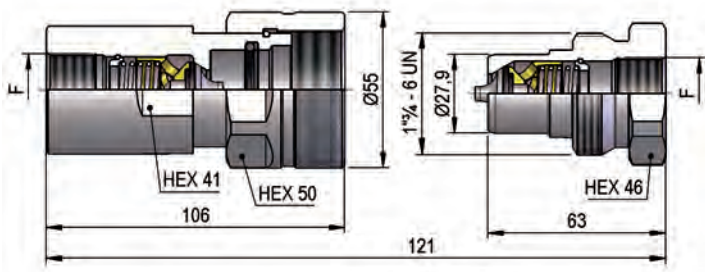
F	STANDARD	FEMMINA - FEMALE - MUFFE - FEMELLE			MASCIO - MALE - STECKER - MALE		
		COD. F	Weight (g)	Packaging (pcs.)	COD. M	Weight (g)	Packaging (pcs.)
BSP 3/8"	DIN 3852-2-X	VVV1.1010.002	344	24	VVV1.1010.003	155	42
NPT 3/8"	ANSI B1.20.3	VVV1.1010.012	346	24	VVV1.1010.013	157	42

VVV1 DN13 - BG 3 - ISO 12.5



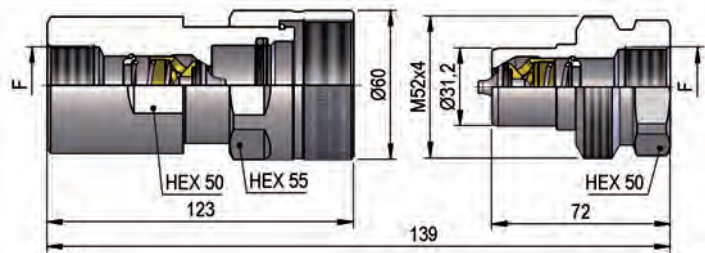
F	STANDARD	FEMMINA - FEMALE - MUFFE - FEMELLE			MASCIO - MALE - STECKER - MALE		
		COD. F	Weight (g)	Packaging (pcs.)	COD. M	Weight (g)	Packaging (pcs.)
BSP 1/2"	DIN 3852-2-X	VVV1.1313.002	576	20	VVV1.1313.003	177	35
NPT 1/2"	ANSI B1.20.3	VVV1.1313.012	582	20	VVV1.1313.013	180	35

VVV1 DN20 - BG 4 - ISO 19

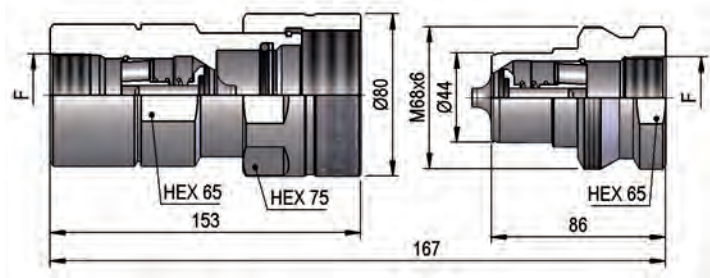


F	STANDARD	FEMMINA - FEMALE - MUFFE - FEMELLE			MASCIO - MALE - STECKER - MALE		
		COD. F	Weight (g)	Packaging (pcs.)	COD. M	Weight (g)	Packaging (pcs.)
BSP 3/4"	DIN 3852-2-X	VVV1.2019.002	988	20	VVV1.2019.003	364	24
NPT 3/4"	ANSI B1.20.3	VVV1.2019.012	997	20	VVV1.2019.013	373	24

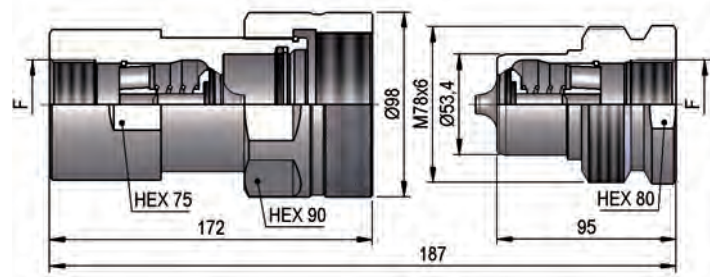
VVV1 DN25 - BG 5 - ISO 25



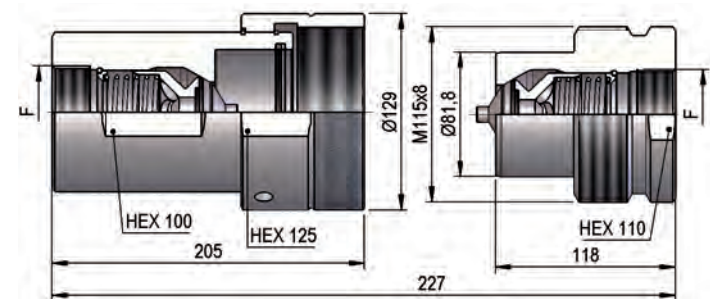
F	STANDARD	FEMMINA - FEMALE - MUFFE - FEMELLE			MASCIO - MALE - STECKER - MALE		
		COD. F	Weight (g)	Packaging (pcs.)	COD. M	Weight (g)	Packaging (pcs.)
BSP 1"	DIN 3852-2-X	VVV1.2525.002	1403	15	VVV1.2525.003	538	18
NPT 1"	ANSI B1.20.3	VVV1.2525.012	1481	15	VVV1.2525.013	540	18

VVV1 DN30 - BG 6 - ISO 31.5


F	STANDARD	FEMMINA - FEMALE - MUFFE - FEMELLE			MASCHIO - MALE - STECKER - MALE		
		COD. F	Weight (g)	Packaging (pcs.)	COD. M	Weight (g)	Packaging (pcs.)
BSP 1"¼	DIN 3852-2-X	VVV1.3031.002	2870	8	VVV1.3031.003	1050	6
NPT 1"¼	ANSI B1.20.3	VVV1.3031.012	2950	8	VVV1.3031.013	1092	6

VVV1 DN39 - BG 7 - ISO 40


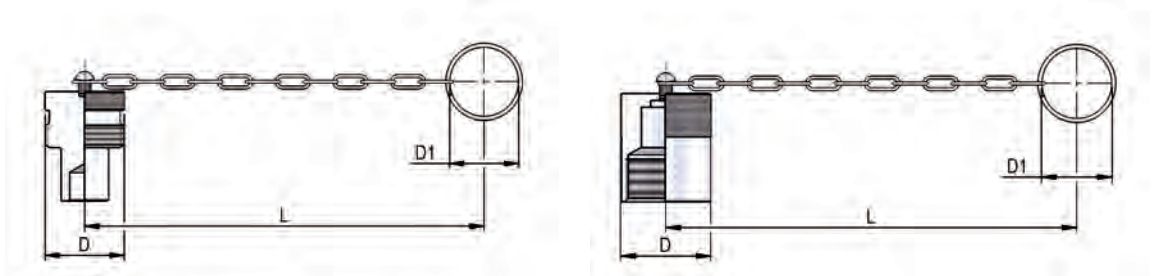
F	STANDARD	FEMMINA - FEMALE - MUFFE - FEMELLE			MASCHIO - MALE - STECKER - MALE		
		COD. F	Weight (g)	Packaging (pcs.)	COD. M	Weight (g)	Packaging (pcs.)
BSP 1"½	DIN 3852-2-X	VVV1.3939.002	4440	3	VVV1.3939.003	1700	8
NPT 1"½	ANSI B1.20.3	VVV1.3939.012	4470	3	VVV1.3939.013	1720	8

VVV1 DN50 - BG 8 - ISO 50


F	STANDARD	FEMMINA - FEMALE - MUFFE - FEMELLE			MASCHIO - MALE - STECKER - MALE		
		COD. F	Weight (g)	Packaging (pcs.)	COD. M	Weight (g)	Packaging (pcs.)
BSP 2"	DIN 3852-2-X	VVV1.5051.002	8730	2	VVV1.5051.003	4940	2
NPT 2"	ANSI B1.20.3	VVV1.5051.012	8920	2	VVV1.5051.013	5070	2

METAL CAPS

NOMINAL SIZE			FEMALE DUST PLUG					MALE DUST					MATERIAL
DNP	BG	ISO	COD. F	Dimensions			Weight (g)	COD. M	Dimensions			Weight (g)	
				D	L	D1			D	L	D1		
10	2	10	SVVV.10202	34	240	30	71	SVVV.10203	34	240	30	58	Aluminum
13	3	12.5	SVVV.13202	34	240	30	83	SVVV.13203	38	240	30	87	Aluminum
20	4	19	SVVV.20202	53	300	48	194	SVVV.20203	48	290	41	163	Aluminum
25	5	25	SVVV.25202	53	290	41	301	SVVV.25203	58	300	48	264	Aluminum
30	6	31.5	SVVV.30202	71	400	48	448	SVVV.30203	81	400	48	760	Aluminum
39	7	40	SVVV.39202	98	210	46	420	SVVV.39203	85	260	46	380	Aluminum
50	8	50	SVVV.50202	115	270	46	1050	SVVV.50203	100	300	46	1250	Aluminum



SPARE PARTS



NOMINAL SIZE			FEMALE GASKET	
DNP	BG	ISO	OR (NBR*)	BK (PTFE)
10	2	10	PDV.010.120	PBV.010.130
13	3	12.5	PAV.013.120	VVV.013.130
20	4	19	PAV.019.120	VVV.019.130
25	5	25	PDV.025.120	PDV.025.130
30	6	31.5	PBV.039.120	VVV.030.130
39	7	40	VVV.039.120	VVV.039.130
50	8	50	VVV.050.120	VVV.050.130

*AL CODICE DELLA GUARNIZIONE IN NBR AGGIUNGERE 'E' PER EPDM O 'V' PER VITON

*TO THE NBR GASKET CODE ADD 'E' FOR EPDM OR 'V' FOR VITON

*ZU DER ARTIKELNR. DER NBR DICHTUNG GEBEN SIE 'E' FUER EPDM ODER 'V' FUER VITON AN

*AU CODE DU JOINT EN NBR JOINDRE 'E' POUR EPDM OU 'V' POUR VITON